

Lantech-View Pro

Windows-base, client-server architecture management utility

- Smart Topology / Monitoring Utility
- Powerful Data Collecting Function
- Convenient Firmware Upgrade/ Configuration Backup
- Useful MIB Browser/ Complier



OVERVIEW

Lantech-View Pro is the Windows-base, client-server architecture powerful network management software. With its user-friendly, graphical and powerful interface, you can easily monitor multiple Lantech industrial switches* and work as SNMP center software.

Lantech-View Pro is a smart tool. It supports SNMP v1/ v2c/ v3 devices, and can discovery these devices which are connected to a network with a clear and graphical drawing.

Administrators can configure each switch, even to export/ import the topology structure as backup. It can monitor multiple switches status easily, providing syslog event warnings, trap warnings, and flow warnings. Beside IP ranged discovery, to add/ delete devices manually is also available, providing a more convenient and flexible

management solution.

As a convenient tool to maintain switches firmware and configuration, the Wizard mode of Lantech-View Pro is able to upgrade firmware and backup configure file for multiple switches at one time**.

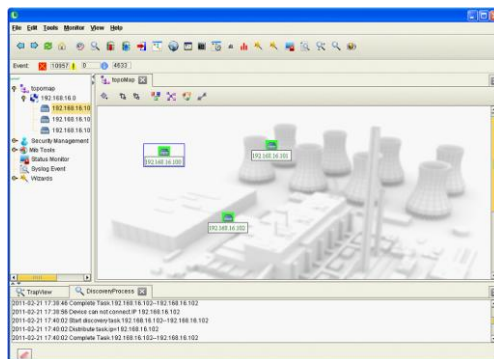
The useful MIB browser/ complier provide several functions such as compiling MIB, detecting errors, or assigning SNMP version.

One of the highlight features of Lantech-View Pro is the powerful information collecting function, which allows administrators to analyze several items between selectable intervals. The collected data can be display in different statistic graphs such as a bar chart or a pie chart.

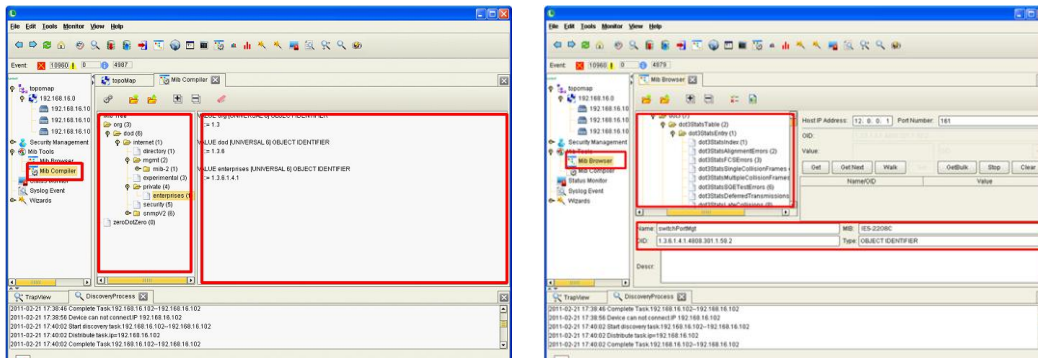
FEATURES

- Network topology view
- Device discovery
- Network statistic
- Device Fault alarm
- Device Web Interface
- Batch firmware upgrade
- Batch IP assignment
- Device management
- Telnet via NMS
- MIB browser
- MIB Complier
- Polling Node
- Event Count
- Editable tool bar
- Threshold Event Monitor
- Throughput Monitor
- Trap View Monitor

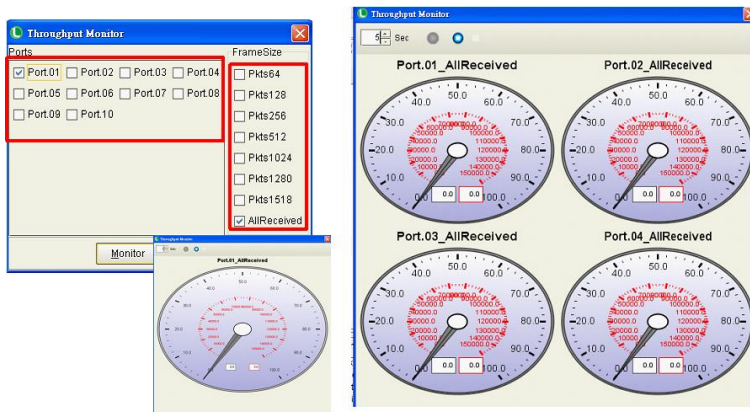
SCREEN SHOTS



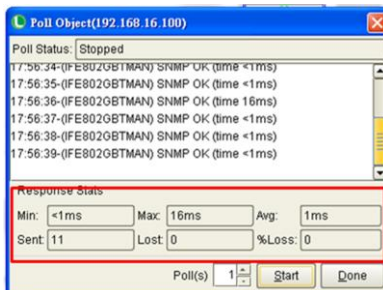
Discovery with topology-drawing



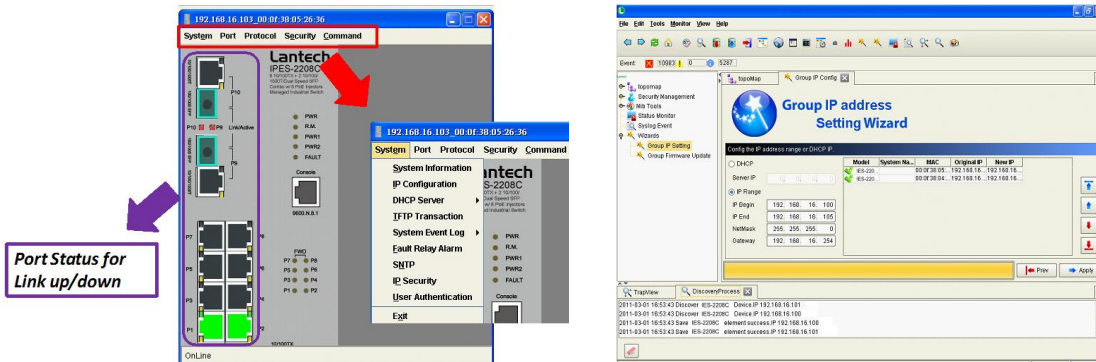
MIB Browser and MIB Compiler: Easy to check, learn, and modify the MIB file.



Throughput Monitor: To detect the throughput packet / frame of port(s).



Poll Object: To poll the device and know the real-time status.



Device status monitoring

SYSTEM MINIMUM REQUIREMENT

- **Operating System:** Microsoft Windows XP, or 2000
- **Screen Resolution:** 1024 x 768, 16-bit color or above
- **Processor:** Pentium 3/800 MHz, or AMD Athlon 1000, or above
- **Memory:** 512 MB RAM (1 GB or above is recommended)
- **Hard Disk Space:** 200 MB at least

COMPARISON

	Lantech-View Pro	Lantech-View Lite
Network topology view	●	●
Device discovery	●	●
Network statistic	●	●
Device Fault alarm	●	●
Device Web Interface	●	●
Batch firmware upgrade	●	●
Batch IP assignment	●	●
Device management	●	-
Telnet via NMS	●	-
MIB browser	●	-
MIB Complier	●	-
Polling Node	●	-
Event Count	●	-
Editable tool bar	●	-
Threshold Event Monitor	●	-
Throughput Monitor	●	-
Trap View Monitor	●	-

Notice:

1. Please make sure you have installed Java Runtime Environment (JRE) on your computer. If not, you can download JRE Version 6 Update 3 from SUN website: <http://java.sun.com/javase/downloads/index.jsp>.

2. Before using Lantech-View Pro, users need to install the driver for the security key first. Double click on the Sentinel System Driver Installer icon to start the installation process.

ORDERING INFORMATION

LVPro_50	Lantech View Pro 50 nodes ; server version + USB key
LVPro_100	Lantech View Pro 100 nodes ; server version + USB key
LVPro_250	Lantech View Pro 250 nodes ; server version + USB key
LVPro_500	Lantech View Pro 500 nodes ; server version + USB key
LV_Unlimited	Unlimited nodes

***Currently Supported Lantech Industrial Switches:**

All of Industrial Management Switches support Lantech-View Pro except IES-2206F-II.

Lantech Communications Global Inc.

www.lantechcom.tw
info@lantechcom.tw

© 2011 Copyright Lantech Communications Global Inc. all rights reserved.
The revise authority rights of product specifications belong to Lantech Communications Global Inc.
Lantech may make changes to specification and product descriptions at anytime, without notice.