

Factory Automation

Entry Industrial Switch

Features

- RJ-45 port support auto MDI/MDI-X Function
- Wide-range redundant power design
- Power polarity reverse protect
- Relay alarm output for system events



IES-0005T 5 10/100TX
Slim Type Industrial Switch
Relay Contact with Alarm System



IES-0008T 8 10/100TX
Slim Type Industrial Switch
Relay Contact with Alarm System

Converter

Features

- DC power detection from 12V to 48V
- Relay alarm output for power failure
- Built-in Link Lose Forwarding Technology



IEC-0101FT
1 10/100TX to 100M-FX
Slim Type Converter

Device Server

Features

- X-Ware Windows utility for Auto device discovery, device setting and monitoring
- Max series speed up to 460.8Kbps
- Versatile serial operation options: Virtual Com, Serial tunnel, TCP Server, TCP Client, UDP
- Configuration by Windows, Web, Telnet
- Security: HTTPS and SSH
- Event warning by Syslog, Email, SNMP Trap, and Beeper
- X-Ware trigger beeper for location
- Virtual COM driver for Windows NT/2000/XP/2003
- Fixed TTY driver for Linux
- Dual Power Inputs by DC 12V~48V Terminal Block and DC Jack
- Built-in 1.5KV magnetic isolation
- Serial Line Protection: 15KV ESD for all signals
- X-Ware setting to have 2 10/100TX ports* (IDS-2102, IPDS-2402, IWDS-2102)
- Up to 4 simultaneous Virtual COM, TCP Server, TCP Client connections (IPDS-2402, IWDS-2102)
- One port simultaneous Virtual COM, TCP Server, TCP Client connections (IDS-2102, IPDS-2402, IWDS-2102)
- Power supply from POE inject (802.3af standard) (IPDS-2402)



IDS-2101F
1 RS-232/ 422/ 485
port to 1 100FX
Ethernet Device Server



IDS-2102
1 RS-232/ 422/ 485
port to 2 10/100TX
Ethernet Device Server

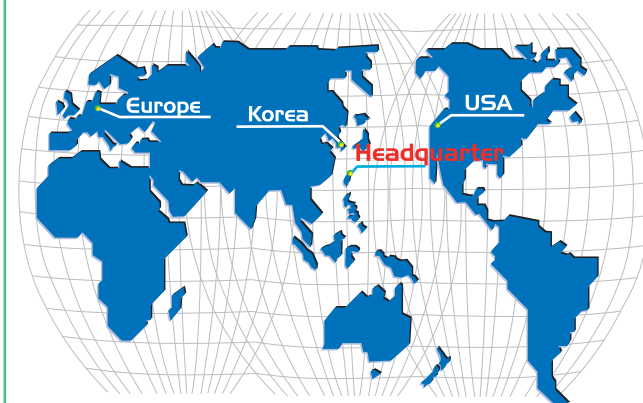


IDS-2401F
4 RS-232/ 422/ 485
port to 1 100FX
Ethernet Device Server



IDS-2402
4x RS-232/ 422/ 485
ports to 2 10/100TX
Ethernet Device Server

World Lantech



Lantech Headquarter

Lantech Communications Global Inc.
5F, No.266, Sec 6, Ming Chan E. Rd.
Neihu Dist, Taipei Taiwan,
R.O.C.
Tel:+886-2-2633-9590
Fax:+886-2-2633-8261
www.lantechcom.tw
www.lantech.tw
info@lantechcom.tw

Lantech USA

Lantech Communications, Inc.
6300E San Ignacio Ave,
San Jose, CA95119
USA
Tel:+1-408-578-7870
Fax:+1-408-578-7871
www.lantechcom.com
sales@lantechcom.com

Lantech Europe

Philipp-kachel-Str.42a
63911 klingenberg am Main
Germany
Tel:+49-9372-9451-121
Fax:+49-9372-9451-112
www.lantech.eu
sales@lantech.eu

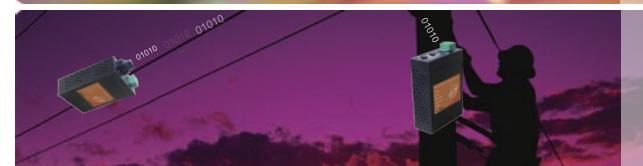
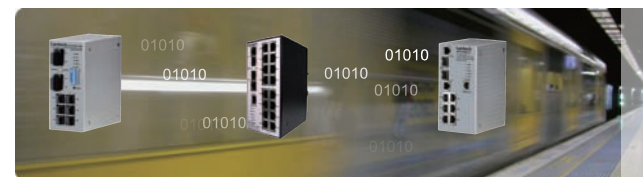
Lantech Korea

#B-703, Electronic Town,
413 Hangangro-2GA, Yongsan-Ku,
SEOUL KOREA(140-873)
Tel:+82-2-3273-3379
Fax:+82-2-3275-3912
www.lantech.kr
sales@lantech.kr

eLantech

Lantech Communications Global Inc.

Delivering Harsh Network
Solutions to
the Optical Fiber World



Transportation

Industrial SNMP Switch

Features

- Supports IGMP snooping, Query mode, QoS 4 queues, SNMP v1, v2c, VLAN, Bandwidth control, STP, RSTP
- Wide-range redundant power design(DC12V-48V)
- SNMP/Web/Telnet/CLI/Menu Driven management
- Supports TFTP firmware update, FTP backup and restore.
- -25~60°C operation temperature for standard models
- -40~75°C operation temperature for E models
- VLAN stacking and ACL for L2+ functionality**
- Send e-mail alert when system events, SMTP support
- Supports X-ring function
- Supports Couple Ring, Central Ring & Dual Homing for redundant Backup



IES-2216C/E
16 10/100TX
+ 2 10/100/1000T/
SFP Combo
(Giga SFP/100SFP)
Industrial Switch



IES-2208C
8 10/100TX
+ 2 10/100/1000T/
SFP Combo
(Giga SFP/100SFP)
Industrial Switch



IGS-2206C
6 10/100/1000T
+ 2 10/100/1000T/
SFP Combo
(Giga SFP/100SFP)
Industrial Switch



IES-2206F
6 10/100TX
+ 2 100FX SNMP
Industrial Switch



IES-2008
8 10/100TX SNMP
Industrial Switch

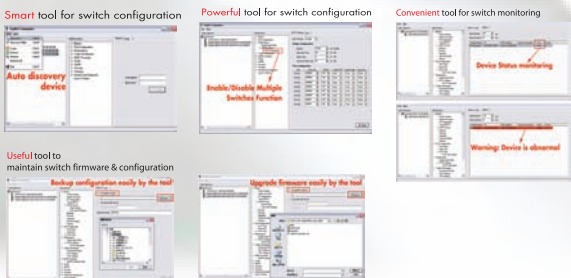


IGS-2404
4 10/100/1000T
+ 4 10/100/1000T/SFP
L2 Managed
Industrial Switch

X-View Utility

Features

- **Smart** tool for switch configuration
 - Auto discovery devices
- **Powerful** tool for switch configuration
 - Configure multiple switches concurrently
- **Convenient** tool for switch monitoring
 - Monitor multiple switches status easily
- **Useful** tool to maintain switch firmware & configuration
 - Upgrade firmware and backup configure file for multiple switches at one time



Telecom/Metro Ethernet

Converters

Features

- 16 slot converter chassis with 2 power slots
- AC or DC power with redundant function
- Fiber Module hot-swappable
- SNMP, Web, Telnet, console management
- Support Simple Network Time Protocol (SNTP)
- Power and Fan Detect
- Event log and SNMP Trap support
- SNMP MIB II and private MIB supports
- HTTP, Telnet security
- IP address security for management station
- Web and TFTP firmware upgrade
- Link Loss Forwarding (LLF)
- Back-door password supports
- Module identification
- 100FX and Gigabit module support single mode or multi mode fiber
- EIA-RS-310C 19" standard
- Loop Back Test
- Support TS-1000 on 10/100TX to 100FX module



MC-216 TS1000
16 Slot SNMP Converter Chassis
with Loopback and Remote Management



CM-021-GB Converter
10/100/1000T to
SFP Media Converter



Multi-Converter Chassis
10 Slot Chassis with
Redundant Power Supply



CM-011-5C/ST Converter
10/100TX to 100FX
Media Converter

Modular Switch

Features

- X-Ring feature for auto-network-recovery in less than 300 ms
- 802.1p CoS, per port 4 queues
- IGMP snooping and Query mode support for Multi-Media application
- Port mirror and bandwidth control
- Supports GVRP function
- TFTP firmware update
- Web/SNMP/Telnet/CLI/RMON management
- Per port bandwidth control
- Management IP address security
- Port Based VLAN /802.1Q VLAN
- IEEE802.3x Flow control
 - Flow control for full duplex
 - Back pressure for half duplex
- IEEE802.3ad Port trunk with LACP
- Spanning tree protocol
 - STP / Rapid STP
- QoS for below method:
 - Port based / Tag based
 - IPv4 ToS/ IPv4, IPv6 DiffServe
- IEEE 802.1x user authentication
- Broadcast storm filter
- DHCP Client, Server
- SNTP and SMTP support
- MAC address security
- SNMP Trap support



LES-2208
8 10/100TX SNMP L2+ Switch
+ 1 10/100/1000T + 1 Giga SFP Uplink



LES-2224C-RPS-III
24 10/100TX L2+ SNMP Switch
+ 2 Giga SFP Combo Uplink



LES-2400-RPS
3 Slot 10/100M Modular
SNMP Switch
+ 2 Giga SFP Combo Uplink



LGS-2424C
24 10/100/1000T
SNMP Switch
w/4 Giga SFP Combo Uplink



LGS-0300
3 Slot Gigabit Modular Switch

Video Surveillance

PoE Solution

Features

- 24 POE injector and build in 200W AC power
- Flow control for full duplex
- High back-plane bandwidth 8.8Gbps
- IEEE802.3ad Port trunk with LACP
- Rapid spanning tree IEEE802.1w
- Spanning tree protocol IEEE 802.1d
- IGMP snooping and IGMP Quer y mode for Multi-media application
- IEEE 802.1p class of ser vice
- Port mirror and bandwidth control
- IEEE 802.1x user authentication
- TACACS+ (option)
- Support ts GVRP function
- Broadcast storm file
- End point insert mode remote power feeding
- Provides extra DC 48V input through RS-232 port
- On line extra power supply testing through RS-232 port
- Management by Web/SNMP/Telnet/ Console
- Support ts command line inter face management
- SNTP support



LPES-2224C-RPS
24 10/100TX SNMP Switch
+ 2 Giga SFP Combo Uplink
with/24 POE injectors



LPES-2208C-8
8 10/100 TX +2
10/100/1000T Mini-GBIC Combo W
8 POE Injector
SNMP Managed Switch



POS-100
Single Port POE Data
and Power Splitter
• DIP Switch for adjusting
5v, 7.5v, 9v, 12v output



POA-100
Single POE Injector
• IEEE 802.3af Fully Compliant;
No power feeding to
non-802.3af PD

Features

- RJ-45 Port Support Auto MDI/MDI-X Function.
- Embedded 8-port PoE Injector function
- SFP(Mini-GBIC) supports 100/1000 Dual Mode
- 1Mbits Packet Buffer.
- IGMP with Snooping and Query mode for Multi Media Application
- 8K MAC address table.
- Redundant Power Design
- GVRP
- Double Tag VLAN (Q in Q)*
- X-Ring
 - X-Ring, Dual Homing, and Couple Ring Topology.
 - Provide redundant backup feature and the recovery time below 300ms.
- Port Trunk with LACP.
- Port base, Tag Base and Type of Service Priority
- Supports Ingress Packet Filter and Egress Rate Limit.
- Supports Broadcast/Multicast Packet Filter Control
- Port Mirror: Monitor traffic in switched networks.
 - TX Packet only → RX Packet only → Both of TX and RX Packet
- System Log Server/Client.
- SMTP e-mail Alert
- Security
 - Port Security: MAC address entries/Filter
 - IP Security: IP address security management to prevent unauthorized intruder.
 - Login Security: IEEE802.1X/RADIUS
- SNMP Trap
 - Device cold start → Power status → Authentication failure
 - X-ring topology changed → Port Link up/Link down → PoE port events
- Relay Alarm Output System Events.
- IGMP with Query mode for Multi Media Application
- TFTP Firmware Update and System Configure Restore/Backup



IPES-2208C/E
8 10/100TX
+ 2 10/100/1000T/
Mini GBIC Combo
(GigaSFP/100SFP)
Industrial Switch



IPES-0005T-4
5 10/100TX with
4 PoE Injector
Industrial Switch

